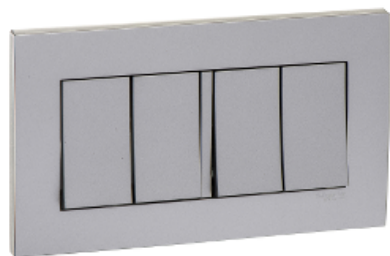




Price* : 160.53 USD



Main

Range	Vivace
Product or component type	Switch
Device short name	KB34
Device application	Control
Device presentation	Complete mechanism

Complementary

Switch function	1-way
Actuator	Rocker
Number of gangs	4 gangs
Colour tint	Aluminium silver
Material	Polycarbonate: grid plate Polycarbonate: surround Nylon: base
Projecting depth	8 mm
Device mounting	Flush
Mounting support	Wall mounted
Fixing mode	By screw M3.5
Fixing center	120.6 mm
Embedding depth	35 mm
Rated current	16 AX at 250 V AC, fluorescent
[Ue] rated operational voltage	250 V AC
Network frequency	50 Hz
Contacts material	Brass and phosphor bronze
Connections - terminals	pillar terminal
Terminal identifier	L1

* Excluding VAT, FCA Jabal Ali & are subject to change – check with your local distributor.

L2
COM

Tightening torque	0.4 N.m
Clamping connection capacity	<= 2.5 mm ²
Width	146 mm
Height	86 mm

Environment

Standards	IEC 60669-1 SS 227 MS IEC 60669-1
Ambient air temperature for operation	-5...40 °C
Relative humidity	0...95 %
Environmental characteristic	Indoor use

Packing Units

Package 1 Weight	136.000 g
Package 1 Height	31.000 mm
Package 1 width	86.000 mm
Package 1 Length	146.000 mm

Offer Sustainability

Sustainable offer status	Green Premium product
REACH Regulation	REACH Declaration
EU RoHS Directive	Compliant EU RoHS Declaration
Mercury free	Yes
RoHS exemption information	Yes
China RoHS Regulation	China RoHS declaration Product out of China RoHS scope. Substance declaration for your information
Environmental Disclosure	Product Environmental Profile